

# The Bowden Series

BLLB - Suspended Mount Low Bay

Project

Date

Part

Type



## About The Bowden Series

The BLLB is a DLC Listed, ETL certified series of fixtures designed for retail spaces. It provides energy-efficient lighting, outstanding performance, and easy maintenance.

## Specifications

Supported Voltage	120-277V, 347V, 120-347V
Available Sizes	2', 4', 8'
Lifetime	L70 of 110,000+ hours, L90 of 34,000+ hours
Lumens	2' 1.75L(1750lm) - 8' 23L (23000lm)
CCT	2700K, 3000K, 3500K, 4000K, 5000K, 6500K
CRI	80+ standard, 90+ and 95+ available
Dimming	0-10V Standard
Mounting	Holes provided for v-hangers, s-hook chain mounting, or aircraft cables. Pendant mount and surface mount brackets available.

## Approvals

- DLC Listed
- ETL Listed
- Dry and Damp Environment Rated
- Designed and Manufactured in Canada

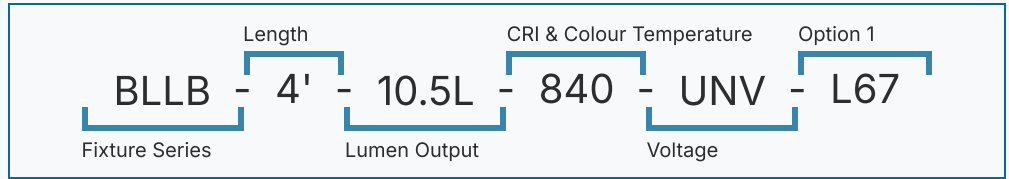
## Warranty

- 5 Year Comprehensive, 10 Year LED

# The Bowden Series

BLLB - Suspended Mount Low Bay

Please use the diagram to the right as an example of a completed order code. If you need any assistance contact your local sales representative.



1	2	3	4	5	6
BLLB					

Series	Length	Lumen Output		CRI	CCT	Voltage					
BLLB	2'	2'-1.75L	1750lm	8-5L	5000lm	8	80	27	2700K	UNV	120-277V
		2'-2.25L	2250lm	8'-6L	6000lm	9	90+	30	3000K	347	347V
	4'	2'-2.75L	2750lm	8'-7L	7000lm	1	95+	35	3500K	UN3	120-347V
		4'-2.5L	2500lm	8'-8L	8000lm	0	THRIVE	40	4000K		
	8'	4'-3.5L	3500lm	8'-9L	9000lm			50	5000K		
		4'-4.5L	4500lm	8'-11L	11000lm			65	6500K		
		4'-5.5L	5500lm	8'-13L	13000lm						
		4'-6.5L	6500lm	8'-15L	15000lm						
		4'-7.5L	7500lm	8'-17L	17000lm						
		4'-8.5L	8500lm	8'-19L	19000lm						
		4'-9.5L	9500lm	8'-21L	21000lm						
		4'-10.5L	10500lm	8'-23L	23000lm						
		4'-11.5L	11500lm								

7
---

## Options

- Lenses**
- L0 No Lens
  - L55 Clear Acrylic
  - L67 Frosted Acrylic (Impact Resistant)

- Cords**
- W3xx White 16/3 (Specify Length)
  - W4xx Black 16/3 (Specify Length)
  - W59xx White 18/5 (Specify Length)
  - W\*\*\* Other Options Available\*

Key.	Cord Length.	Key	Cord Length
6	6FT	15	15FT
10	10FT	20	20FT

Ex. W406 would be 16/3 Black, 6FT

- Dimming**
- B11 0-10V Dimming Leads
  - B12 Line Voltage Dimming
  - B27 Dim-to-off Driver

- Wireless Controls**
- WCAWN Lutron Athena (Node)
  - WCAWNS Lutron Athena (Sensor)
  - WC10 Encelium
  - WC18 NX Wireless
  - WC19 Avi-on
  - WC22 JDRF Autonomy
  - WC31 Keilton
  - WCxx Other Options Available\*

- Motion Sensors**
- W26 Photocell Motion Sensor
  - W57 Dimming Motion Sensor (dims to 50% when unoccupied)
  - W53\* On/Off
  - W8\* High/Low
  - WX16 Microwave Dimmable Sensor
  - W\*\* Other Options Available\*

- Wire Guard**
- G1 Heavy Duty White
  - G5 Heavy Duty Black

- Emergency Driver**
- B17 UL924 10W Battery Back-up
  - F8 UL924 Emergency Relay

- Packaging**
- BLANK Individually Boxed on Pallets
  - P0 Bulk Packaging

- Mounting**
- BLANK Surface Mount
  - M1 V-Hangers
  - M2xx V-Hanger with Aircraft Loop Cables
  - M3xx Y-Toggle Aircraft Cables
  - M24 Single Pendant Mount (3/4 Hub)
  - M25 Surface Mount
  - M\*\* Other Options Available\*

Key.	Aircraft Length.	Key	Aircraft Length
5	5FT	15	15FT
10	10FT	20	20FT

Ex. M305 would be Y-Toggle, 5FT

- Modular Wiring**
- W27XYZC Modular Power Cable (WAGO)
  - W22XY Molex Row Mounting Wiring

- Baffles**
- J31 White Louver
  - J47 Black Louver

- Warranty**
- CL7 10-Year Comprehensive Warranty Upgrade

# The Bowden Series

BLLB - Suspended Mount Low Bay


Low Bay Lighting by 

## Documentation and Resources

All files and resources are available on our website for download. Files and resources are also embedded as links in this document, listed below. Additional files may be available upon request.






Please contact your local sales agent [here](#) or contact [sales@bjtake.com](mailto:sales@bjtake.com) for more information.

 [BLLB - Installation Instructions](#)

 [BLLB - Photometry.zip](#)

## Certifications and Listings

Certifications that apply to this fixture and its possible configurations are listed here. More information available upon request.

Icon	Description
	DLC Listed
	ETL Listed
	Wireless Controls Available
	90 and 95+ CRI Options Available
	120-347V(UN3) Available

## Usage Applications

This fixture can be used in a variety of applications, and is ideal for the following:

Usage Application
Distribution Facilities
Grocery Stores
Gymnasiums & Arenas
Logistics & Warehouses
Manufacturing Facilities
Professional Sports Facilities
Retail Stores
Schools
Storage Facilities
Aisle Lighting
Suspended
Surface Mount

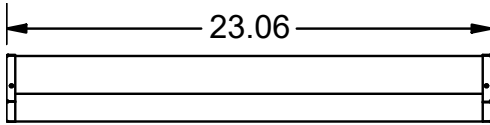
## Warranty Statement

BJ Take products are tested and/or inspected prior to being packaged for shipment and are guaranteed from the day the product is shipped for a period of ten-year LED chip warranty and a five-year comprehensive component warranty. This can be upgraded to a ten-year comprehensive warranty on request.

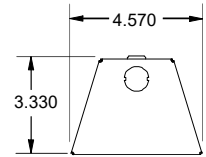
# The Bowden Series

BLLB - Suspended Mount Low Bay

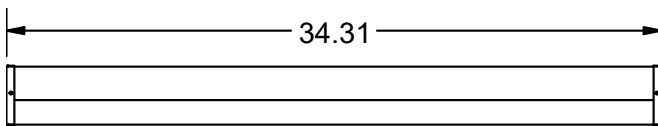
BLLB 2' Side



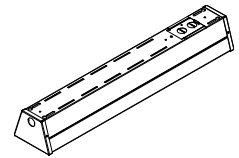
BLLB 2'-8" End



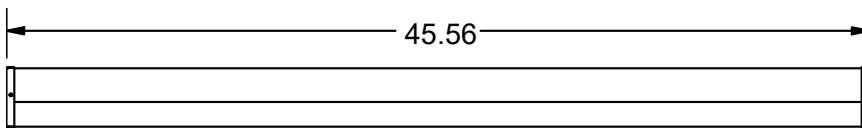
BLLB 3' Side



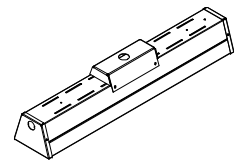
BLLB Standard



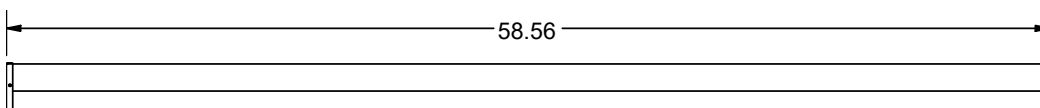
BLLB 4' Side



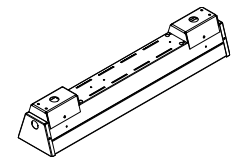
BLLB Pendant Mount



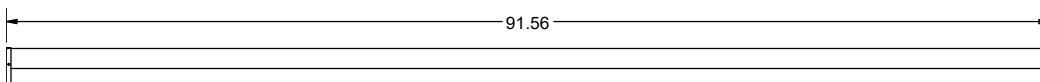
BLLB 6' Side



BLLB Surface Mount



BLLB 8' Side



- \* Drawings not to scale
- \* Standard tolerances apply
- \* Specifications may change without notice

# The Bowden Series

BLLB - Suspended Mount Low Bay

## BLLB 4' Wattage

Size	Lumen Output	Actual Lumen Output	Fixture Wattage	Lumens per Watt
4'	4.5	4521	33.4	135.4
4'	5.5	5509	41.1	134.0
4'	6.5	6475	48.8	132.6
4'	7.5	7419	56.5	131.2
4'	8.5	8342	64.3	129.8
4'	9.5	9242	72.0	128.4
4'	10.5	10121	79.7	127.0
4'	11.5	10984	87.5	125.6

## BLLB 8' Wattage

Size	Lumen Output	Actual Lumen Output	Fixture Wattage	Lumens per Watt
8'	9	8978	66.2	135.6
8'	11	10939	81.5	134.2
8'	13	12857	96.9	132.7
8'	15	14731	112.2	131.3
8'	17	16564	127.5	129.9
8'	19	18353	142.8	128.5
8'	21	20095	158.1	127.1
8'	23	21809	173.5	125.7

## BLLB 3' Wattage

Size	Lumen Output	Actual Lumen Output	Fixture Wattage	Lumens per Watt
3'	3.0	3000	22.1	135.5
3'	4.0	3987	29.7	134.1
3'	4.5	4461	33.6	132.7
3'	5.0	4922	37.5	131.3
3'	5.5	4372	41.4	129.9
3'	6.0	5809	45.2	128.5
3'	6.5	6235	49.1	127.1
3'	7.5	6654	52.9	125.7

## BLLB 6' Wattage

Size	Lumen Output	Actual Lumen Output	Fixture Wattage	Lumens per Watt
6'	6.75	6749.5	49.8	135.5
6'	8.25	8224.0	61.3	134.1
6'	9.75	9666.0	72.8	132.7
6'	11.25	11075.0	84.4	131.3
6'	12.75	12453.0	95.9	129.9
6'	14.25	13797.5	107.4	128.5
6'	15.75	15108.0	118.9	127.1
6'	17.25	16396.5	130.5	125.7

## BLLB 2' Wattage

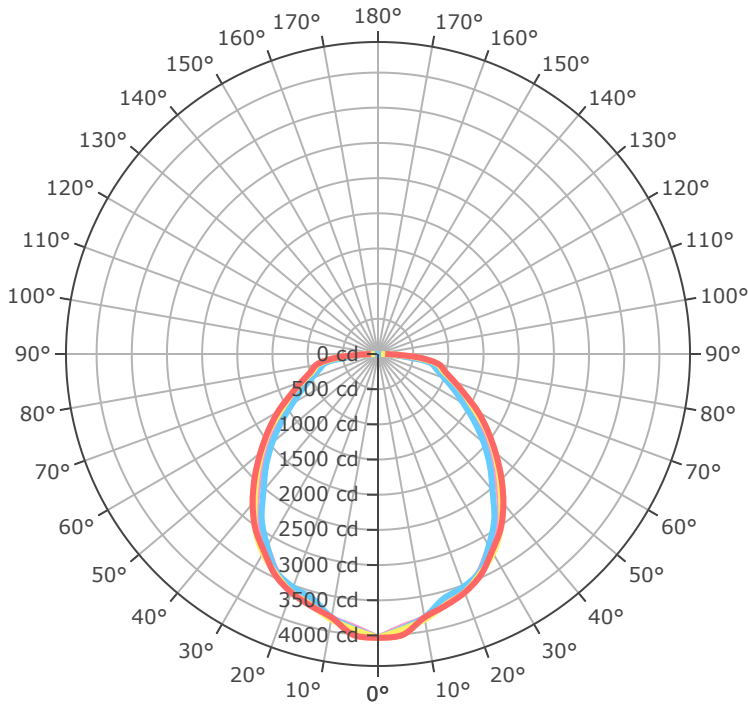
Size	Lumen Output	Actual Lumen Output	Fixture Wattage	Lumens per Watt
2'	1.75	1758	13.0	135.4
2'	2.25	2755	20.6	134.0
2'	2.75	3238	24.4	132.6

- \* Drawings not to scale
- \* Standard tolerances apply
- \* Specifications may change without notice

# The Bowden Series

BLLB - Suspended Mount Low Bay

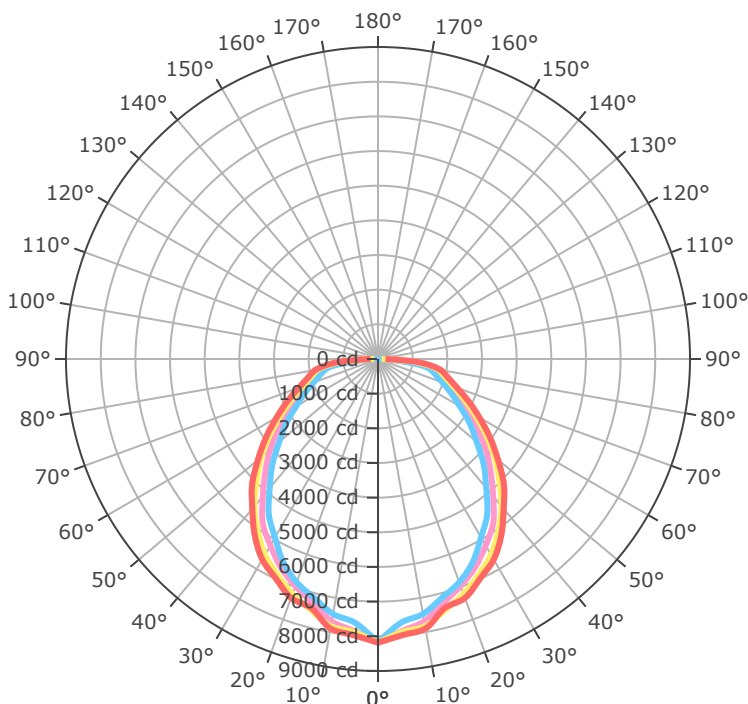
## BLLB-4FT-11.5L-840-UNV-L67



- 0.0°
- 45.0°
- 90.0°
- 135.0°
- 180.0°

Mtg Height	Light Level	Beam Diameter
6.0 ft	112.0 fc	15.9 ft
8.0 ft	63.0 fc	21.2 ft
10.0 ft	40.3 fc	26.5 ft
12.0 ft	28.0 fc	31.8 ft
14.0 ft	20.6 fc	37.1 ft
16.0 ft	15.8 fc	42.4 ft
24.0 ft	7.0 fc	63.6 ft
32.0 ft	3.9 fc	84.8 ft
40.0 ft	2.5 fc	106.0 ft
48.0 ft	1.8 fc	127.2 ft
56.0 ft	1.3 fc	148.4 ft
64.0 ft	1.0 fc	169.6 ft

## BLLB-8FT-23L-840-UNV-L67



- 0.0°
- 45.0°
- 90.0°
- 135.0°
- 180.0°

Mtg Height	Light Level	Beam Diameter
6.0 ft	227.4 fc	16.3 ft
8.0 ft	127.9 fc	21.8 ft
10.0 ft	81.9 fc	27.2 ft
12.0 ft	56.8 fc	32.7 ft
14.0 ft	41.8 fc	38.1 ft
16.0 ft	32.0 fc	43.6 ft
24.0 ft	14.2 fc	65.3 ft
32.0 ft	8.0 fc	87.1 ft
40.0 ft	5.1 fc	108.9 ft
48.0 ft	3.6 fc	130.7 ft
56.0 ft	2.6 fc	152.5 ft
64.0 ft	2.0 fc	174.3 ft

# The Bowden Series

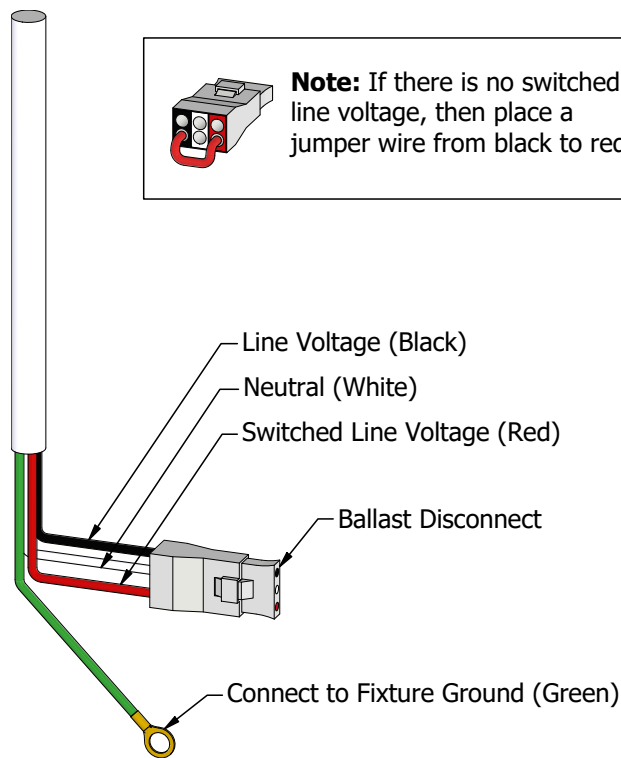
BLLB - Suspended Mount Low Bay

Low Bay Lighting by **BJTAKE**  
LIGHTING

## Emergency Battery Plan - 20W

Emergency Lighting	Solution System Components	System Operation
Option Code 'B17' - UL 924 listed components that are factory installed in the luminaire	UL 924 listed 20-watt battery integral to the luminaire	Loss of normal power is detected by the B17 emergency light solution and the power supply is switched automatically to the 20-watt integral battery pack which powers the emergency LED lighting driver.
	UL 924 listed LED emergency lighting driver integral to the luminaire	The battery pack and emergency LED driver are UL 924 certified to provide a minimum of 90-minutes of emergency lighting.
	Wiring options for both switched and unswitched emergency lighting	

## Emergency Lighting Wiring



## Important Information

More information on emergency lighting options and configurations available on request.

# The Bowden Series

BLLB - Suspended Mount Low Bay

Low Bay Lighting by **BJTAKE** LIGHTING

THRIVE™ is an **optional** natural daylight technology replacing typical CRI order codes.



## THRIVE™ Human-Centric Lighting

Order Code	Option	Use-case
8	80 CRI	Energy-efficient, lower cost, acceptable colour rendering for general lighting applications.
9	90 CRI	More accurate, natural and vibrant colour appearance. Suitable for retail, offices, and applications where colour accuracy is of higher importance.
1	95+ CRI	Near-perfect colour fidelity, excellent for architectural, medical, retail, and other premium applications.
0	THRIVE	Human-centric lighting engineered to provide the most accurate recreation of natural daylight. Highly beneficial for healthcare, office environments, schools and other applications where all-day comfort and general well-being are top priorities.

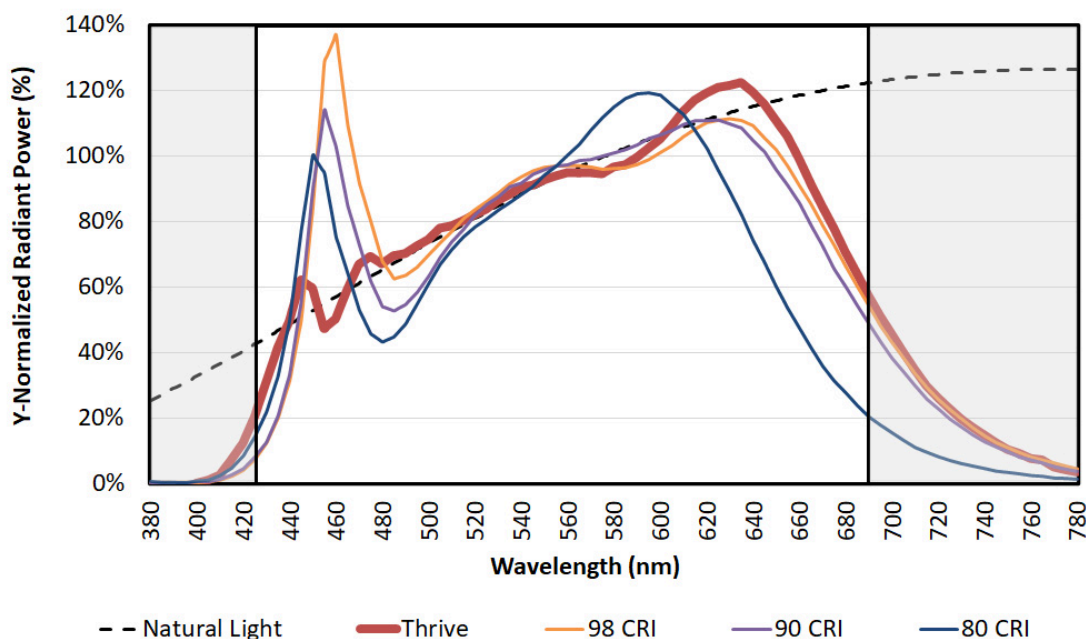
Engineered to provide the closest match to natural light available using proprietary chip, phosphor, and packaging technology, Thrive can be used in constant colour point luminaires to bring full spectrum natural light indoors, or in tunable white luminaires to incorporate circadian elements that may impact human well-being.

The high-fidelity spectral output of Thrive creates stunning environments with excellent colour rendering and outstanding TM-30 metrics. Target applications include office, education, healthcare, retail, hospitality, architectural, museums, and residential lighting.

 [Bridgelux White Paper - Average Spectral Difference.pdf](#)

The effect of the THRIVE™ spectral power distributions at a CCT of 4000K (typical for interior lighting in commercial, office, and education settings) is shown in the figure below. The reference light source at this colour temperature is firelight, represented diagrammatically as the blackbody curve (BBC) and referenced in the below figure as natural light. LEDs offering a CRI of 90 or 98 have a closer match to the blackbody curve than the 80 CRI light source. Nevertheless, across the entire visual spectrum, both light sources show a substantial deviation from the natural light BBC. This is shown in the spectral spikes (deviations above the blackbody curve) and valleys (deviations below the blackbody curve).

Spectral power distributions of LED light sources at 4000K against the blackbody curve.



# The Bowden Series

BLLB - Suspended Mount Low Bay

Low Bay Lighting by **BJTAKE**  
LIGHTING

## Gallery Information

Below you will find images of relevant products and configurations for the BLLB.

