

# The Hinton Series

BLRH - Recessed Hospital-Grade

Project

Date

Part

Type

## About The Hinton Series

The BLRH is a luminaire designed for use in Hospitals where energy-efficiency, performance and ease of maintenance is essential. This solution is designed with the patient and medical professional in mind, offering ambient, exam, reading, and nightlight settings with colour temperature options for all configurations to ensure patient comfort.

## Specifications

Supported Voltage	120-277V, 347V, 120-347V
Available Sizes	1x4', 2x2', 2x4'
Lifetime	L70 of 100,000+ hours
Lumens	Ambient 1.5L-4.5L, Exam 3.5L-15L
Operating Temperature	-20°C/+25°C (-40°/+40°C upgrade)
CCT	2700K, 3000K, 3500K, 4000K, 5000K, 6500K
CRI	80+ standard, 90+ and 95+ available
Dimming	0-10V Standard
Mounting	Designed for T-Bar ceilings

## Approvals

- Made with UL Listed components

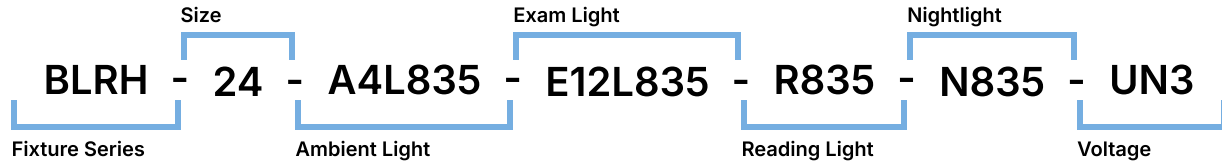
# The Hinton Series

BLRH - Recessed Hospital-Grade

Hospital Grade Lighting  
by



## Ordering Information



1	2	3	4	5	6
BLRH					

Series	Size	Ambient Lm	Ambient CRI	Ambient CCT	Exam Lm
BLRH	14 1x4	1x4-A1.5L	8 80	27 2700K	BLANK - None
	22 2x2	2x2-A2L	9 90+	30 3000K	1x4-E3.5L
	24 2x4	2x2-A2.5L	1 95+	35 3500K	2x2-E4L
		2x2-A3L	0 THRIVE	40 4000K	2x2-E5L
		2x4-A3L		50 5000K	2x2-E6L
		2x4-A3.5L		65 6500K	2x4-E8L
		2x4-A4L			2x4-E10L
		2x4-A4.5L			2x4-E12L
					2x4-E15L

7	8	9	10	11	12	13

Exam CRI	Exam CCT	Reading CRI	Reading CCT	NightLight CRI	NightLight CCT	Voltage
BLANK None	BLANK None	BLANK None	BLANK None	BLANK None	BLANK None	UNV 120-277V
8 80	27 2700K	R8 80	27 2700K	N8 80	27 2700K	347 347V
9 90+	30 3000K	R9 90+	30 3000K	N9 90+	30 3000K	UN3 120-347V
1 95+	35 3500K	R1 95+	35 3500K	N1 95+	35 3500K	
	40 4000K		40 4000K		40 4000K	
	50 5000K		50 5000K		50 5000K	
	65 6500K		65 6500K		65 6500K	

14	
----	--

## Options

### Lenses

BLANK Frosted Acrylic

### Dimming

- B11 0-10V Dimming Leads
- B12 Line Voltage Dimming
- B27 Dim-to-off Driver
- B\*\* Other Options Available\*

### Emergency Driver

- B17 UL924 10W Battery Back-up on Ambient Light
- F8 UL924 Emergency Relay

### Finish

- BLANK Matte White w/ Silver Ion Technology
- C5 Matte Black
- CUSTOM\* Custom Colour Choice

### Packaging

- BLANK Individually Boxed on Pallets
- P0 Bulk Packaging

### Warranty

- CL7 10-Year Comprehensive Warranty Upgrade

## Documentation and Resources

All files and resources are available on our website for download. Files and resources are also embedded as links in this document, listed below. Additional files may be available upon request.

Please contact your local sales agent [here](#) or contact [sales@bjtake.com](mailto:sales@bjtake.com) for more information.

## BLRH - Photometry

### Certifications and Listings

Certifications that apply to this fixture and its possible configurations are listed here. More information available upon request.

Icon	Description
	Wireless Controls Available
	90 and 95+ CRI Options Available
	120-347V(UN3) Available

### Usage Applications

This fixture can be used in a variety of applications, and is ideal for the following:

Usage Application
Hospitals
Long-Term Care

## Warranty Statement

BJ Take products are tested and/or inspected prior to being packaged for shipment and are guaranteed from the day the product is shipped for a period of ten-year LED chip warranty and a five-year comprehensive component warranty. This can be upgraded to a ten-year comprehensive warranty on request.

## Light Configuration Diagrams

The BLRH has settings depending on the style of lighting required by the patient. Please refer to the diagram below for setting information.



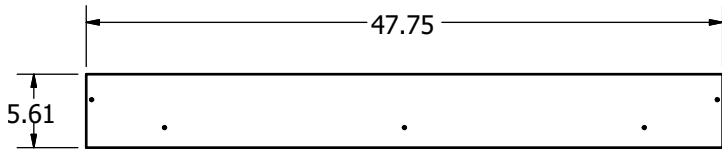
# The Hinton Series

BLRH - Recessed Hospital-Grade

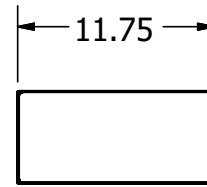
Hospital Grade Lighting  
by



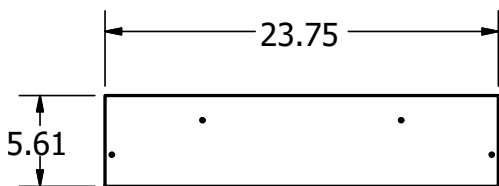
BLRH 1x4 Side Dimensions



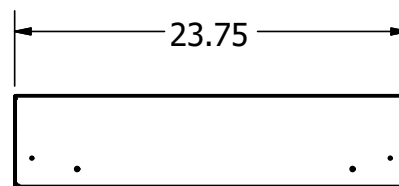
1x4 End Dimensions



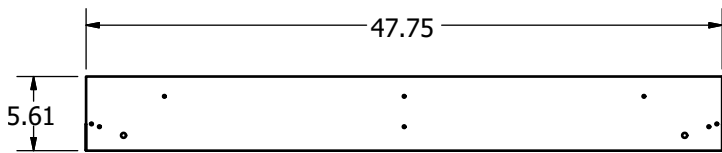
BLRH 2x2 Side Dimensions



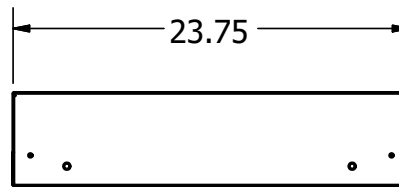
2x2 End Dimensions



BLRH 2x4 Side Dimensions



2x4 End Dimensions



BLRH Ambient Light Wattage

Output	Actual Lumens	lm/W	Wattage
3.5L	3549	128.1	27.70
4.5L	4529	126.3	35.86

BLRH Exam Light Wattage

Output	Actual Lumens	lm/W	Wattage
10L	10183	149.90	67.93
12L	12125	149.89	80.89

BLRH NightLight Wattage

Output	Actual Lumens	lm/W	Wattage
0.4L	444	98.1	4.53

BLRH Reading Light Wattage

Output	Actual Lumens	lm/W	Wattage
1L	1010	84	12.02

\* Drawings not to scale

\* Standard tolerances apply

\* Specifications may change without notice

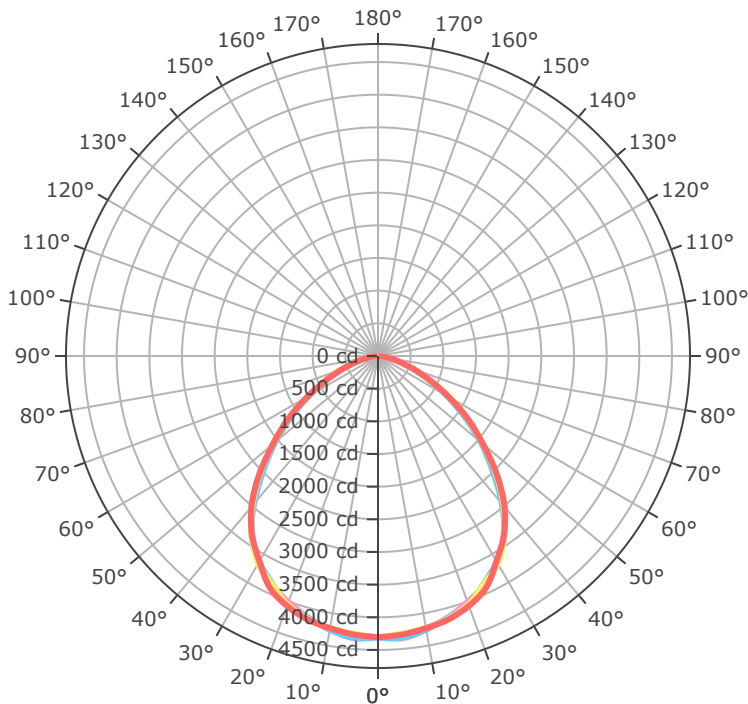
# The Hinton Series

BLRH - Recessed Hospital-Grade

Hospital Grade Lighting  
by



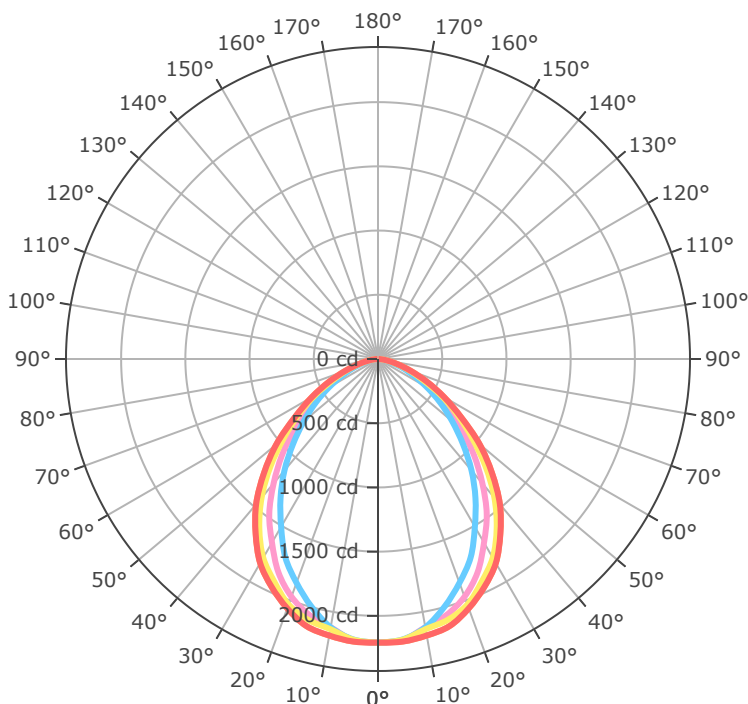
## BLRH-2X4-10L-E840-L18



- 0.0°
- 45.0°
- 90.0°
- 135.0°
- 180.0°

Mtg Height	Light Level	Beam Diameter
6.0 ft	119.6 fc	14.0 ft
8.0 ft	67.3 fc	18.7 ft
10.0 ft	43.1 fc	23.3 ft
12.0 ft	29.9 fc	28.0 ft
14.0 ft	22.0 fc	32.7 ft
16.0 ft	16.8 fc	37.4 ft
24.0 ft	7.5 fc	56.0 ft
32.0 ft	4.2 fc	74.7 ft
40.0 ft	2.7 fc	93.4 ft
48.0 ft	1.9 fc	112.1 ft
56.0 ft	1.4 fc	130.8 ft
64.0 ft	1.1 fc	149.4 ft

## BLRH-2X4-4.5L-A840-L18



- 0.0°
- 45.0°
- 90.0°
- 135.0°
- 180.0°

Mtg Height	Light Level	Beam Diameter
6.0 ft	61.3 fc	13.5 ft
8.0 ft	34.5 fc	18.0 ft
10.0 ft	22.1 fc	22.5 ft
12.0 ft	15.3 fc	27.0 ft
14.0 ft	11.3 fc	31.5 ft
16.0 ft	8.6 fc	36.0 ft
24.0 ft	3.8 fc	54.0 ft
32.0 ft	2.2 fc	72.0 ft
40.0 ft	1.4 fc	90.0 ft
48.0 ft	1.0 fc	108.1 ft
56.0 ft	0.7 fc	126.1 ft
64.0 ft	0.5 fc	144.1 ft

THRIVE™ is an **optional** natural daylight technology replacing typical CRI order codes.

Order Code	Option	Use-case
8	80 CRI	Energy-efficient, lower cost, acceptable colour rendering for general lighting applications.
9	90 CRI	More accurate, natural and vibrant colour appearance. Suitable for retail, offices, and applications where colour accuracy is of higher importance.
1	95+ CRI	Near-perfect colour fidelity, excellent for architectural, medical, retail, and other premium applications.
0	THRIVE	Human-centric lighting engineered to provide the most accurate recreation of natural daylight. Highly beneficial for healthcare, office environments, schools and other applications where all-day comfort and general well-being are top priorities.



## THRIVE™

### Human-Centric Lighting

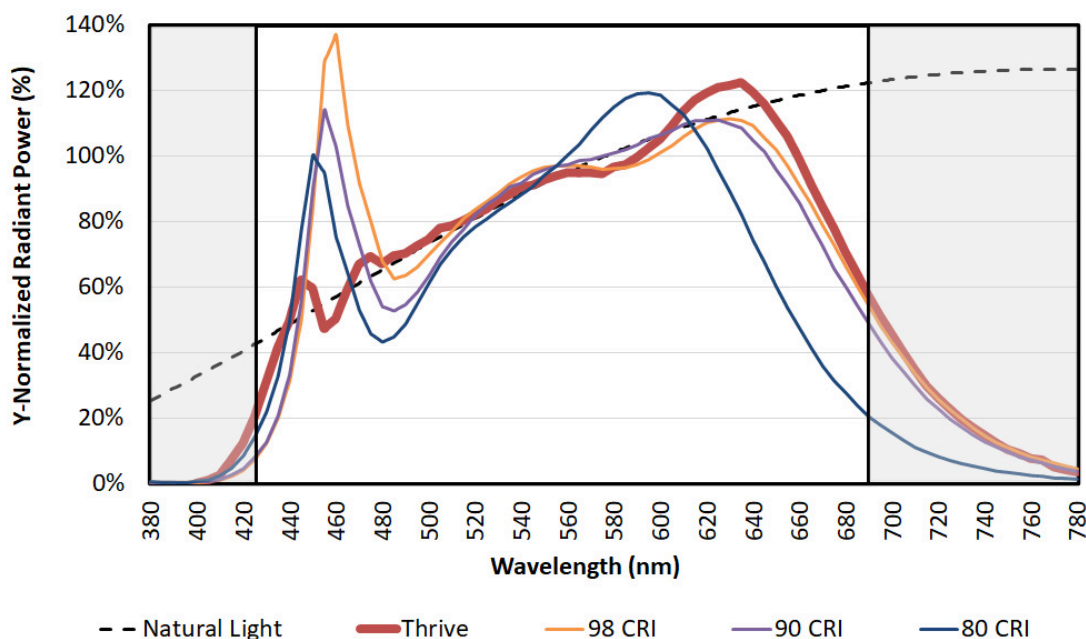
Engineered to provide the closest match to natural light available using proprietary chip, phosphor, and packaging technology, Thrive can be used in constant colour point luminaires to bring full spectrum natural light indoors, or in tunable white luminaires to incorporate circadian elements that may impact human well-being.

The high-fidelity spectral output of Thrive creates stunning environments with excellent colour rendering and outstanding TM-30 metrics. Target applications include office, education, healthcare, retail, hospitality, architectural, museums, and residential lighting.

[Bridgelux White Paper - Average Spectral Difference.pdf](#)

The effect of the THRIVE™ spectral power distributions at a CCT of 4000K (typical for interior lighting in commercial, office, and education settings) is shown in the figure below. The reference light source at this colour temperature is firelight, represented diagrammatically as the blackbody curve (BBC) and referenced in the below figure as natural light. LEDs offering a CRI of 90 or 98 have a closer match to the blackbody curve than the 80 CRI light source. Nevertheless, across the entire visual spectrum, both light sources show a substantial deviation from the natural light BBC. This is shown in the spectral spikes (deviations above the blackbody curve) and valleys (deviations below the blackbody curve).

Spectral power distributions of LED light sources at 4000K against the blackbody curve.



## Gallery Information

Below you will find images of relevant products and configurations for the BLRH.

