

The Orillia Series

BLCO - Surface Mount Cove

Project

Date

Part

Type



About The Orillia Series

The BLCO is a surface mount luminaire designed for task lighting and cove lighting applications.

Specifications

Supported Voltage	120-277V, 347V, 120-347V
Available Sizes	4'
Lifetime	L70 of 99,000+ hours, L90 of 30,000+ hours
Lumens	1' 1,125L (1125lm) - 8' 23L (23000lm)
CCT	2700K, 3000K, 3500K, 4000K, 5000K, 6500K
CRI	80+ standard, 90+ and 95+ available
Dimming	0-10V Standard
Mounting	Surface mount

Approvals

- Dry and Damp Environment Rated
- Designed and Manufactured in Canada

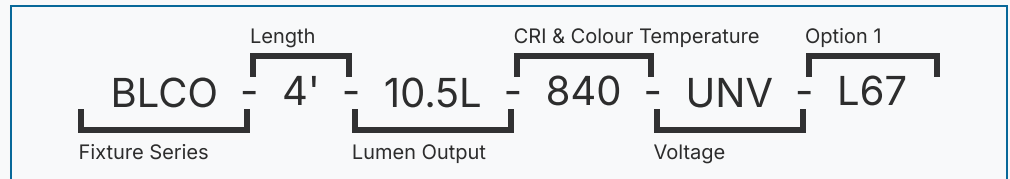
Warranty

- 5 Year Comprehensive, 10 Year LED

The Orillia Series

BLCO - Surface Mount Cove

Please use the diagram to the right as an example of a completed order code. If you need any assistance contact your local sales representative.



1	2	3	4	5	6
BLCO					

Series	Length	Lumen Output		CRI		CCT		Voltage			
BLCO	2'	4' 2.5L	2500lm	4' 5.5L	5500lm	8	80	27	2700K	UNV	120-
	4'	4' 3.5L	3500lm	4' 6.5L	6500lm	9	90+	30	3000K		277V
	8'	4' 4.5L	4500lm			1	95+	35	3500K	347	347V
								40	4000K	UN3	120-
								50	5000K		347V
								65	6500K		

7	
---	--

Options

Lenses

L0	No Lens
L18	Frosted Acrylic Lens
L62	Frosted Asymmetric Acrylic Lens

Cords

W3xx	White 16/3 (Specify Length)
W4xx	Black 16/3 (Specify Length)
W59xx	White 18/5 (Specify Length)
W***	Other Options Available*

Key.	Cord Length.	Key	Cord Length
6	6FT	15	15FT
10	10FT	20	20FT

Dimming

Ex. W406 would be 16/3 Black, 6FT

B11	0-10V Dimming Leads
B12	Line Voltage Dimming
B27	Dim-to-off Driver

Wireless Controls

WCAWN	Lutron Athena (Node)
WCAWNS	Lutron Athena (Sensor)
WC10	Encelium
WC18	NX Wireless
WC19	Avi-on
WC22	JDRF Autonomy
WC31	Keilton
WCxx	Other Options Available*

Modular Wiring

W27XYZC	Modular Power Cable (WAGO)
W22XY	Molex Row Mounting Wiring

Emergency Driver

B24	UL924 20W Battery Back-up
F8	UL924 Emergency Relay

Packaging

BLANK	Individually Boxed on Pallets
P0	Bulk Packaging

Warranty




CL7	10-Year Comprehensive Warranty Upgrade
-----	--

The Orillia Series

BLCO - Surface Mount Cove

Certifications and Listings

Certifications that apply to this fixture and its possible configurations are listed here. More information available upon request.

Icon	Description
	Wireless Controls Available
	90 and 95+ CRI Options Available
	120-347V(UN3) Available

Usage Applications

This fixture can be used in a variety of applications, and is ideal for the following:

Usage Application
Task Lighting
Shopping Centers
Hotels
Offices

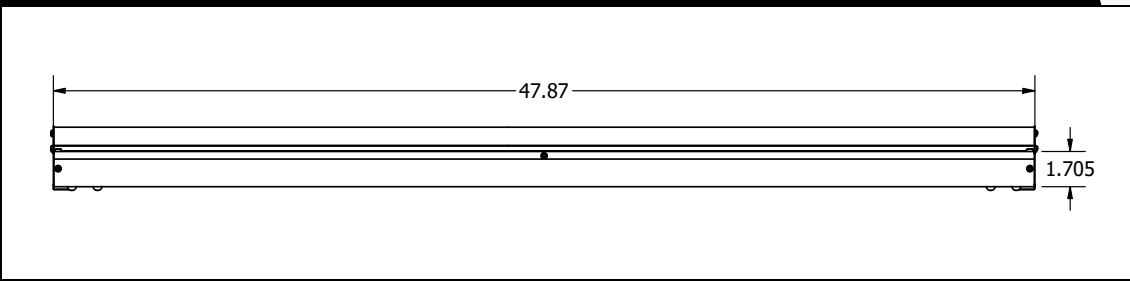
Warranty Statement

BJ Take products are tested and/or inspected prior to being packaged for shipment and are guaranteed from the day the product is shipped for a period of ten-year LED chip warranty and a five-year comprehensive component warranty. This can be upgraded to a ten-year comprehensive warranty on request.

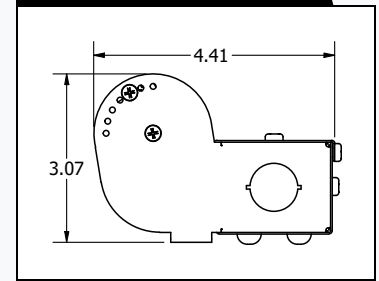
The Orillia Series

BLCO - Surface Mount Cove

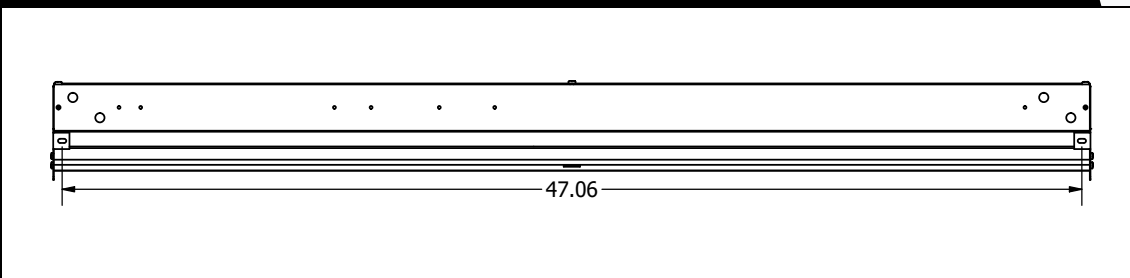
BLCO Side (end to end)



BLCO End



BLCO Side (mounting width)



BLCO Wattage

Size	Lumen Output	Actual Lumen Output	Fixture Wattage	Lumens per Watt
4'	2.5L	2549	16.5	154.9
4'	3.5L	3588	23.8	150.8
4'	4.5L	4599	30.9	146.9
4'	5.5L	5630	39.4	143.1
4'	6.5L	6616	47.9	138.2

- * Drawings not to scale
- * Standard tolerances apply
- * Specifications may change without notice

Gallery Information

Below you will find images of relevant products and configurations for the BLCO.

