

# The Sutton Series

BRLS - Strip Retrofit Kit

Project

Date

Part

Type



## About The Sutton Series

The BRLS is an LED retrofit kit offering up to 50% in energy savings over a standard T8 fixture. It has been designed to convert existing 4ft and 8ft commercial or industrial strip fixtures from T8 or T12 to LED. Its flexibility and simple installation make it easy to take advantage of improved energy-efficiency and performance.

## Specifications

Supported Voltage	120-277V, 347V, 120-347V, 480V
Available Sizes	4', 8' Length, 3", 4", 5" Width
Lifetime	L70 of 110,000+ hours, L90 of 34,000+ hours
Operating Temperature	-20°C/+25°C
Lumens	Lumen output ranging from 2L (2071lm) to 6L (6064lm)
CCT	2700K, 3000K, 3500K, 4000K, 5000K, 6500K
CRI	80+ standard, 90+ and 95+ available
Dimming	0-10V Standard

## Approvals

- Dry and Damp Environment Rated
- Designed and Manufactured in Canada

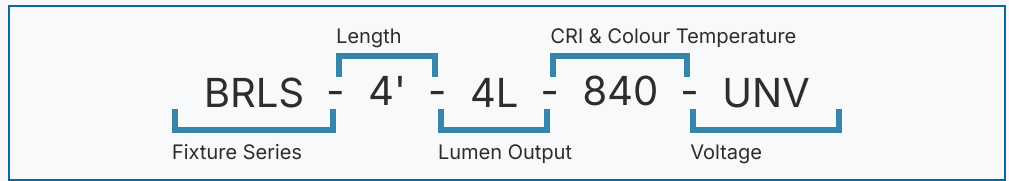
## Warranty

- 5 Year Comprehensive, 10 Year LED

# The Sutton Series

BRLS - Strip Retrofit Kit

Please use the diagram to the right as an example of a completed order code. If you need any assistance contact your local sales representative.



1	2	3	4	5	6	7
BRLS						

Series	Length	Width		Lumen Output				CRI		CCT		Voltage	
BRLS	4'	3W	3" Wide'	4'-2L	2,133lm	8'-5L	5,432lm	8	80	27	2700K	UNV	120-
		4W	4" Wide	4'-2.5L	2,675lm	8'-6L	6,660lm	9	90+	30	3000K		277V
	8'	5W	5" Wide	4'-3L	3,221lm	8'-7L	7,396lm	1	95+	35	3500K	347	347V
				4'-3.5L	3,772lm	8'-8L	8,445lm			40	4000K	UN3	120-
				4'-4L	4,327lm	8'-9L	9,000lm			50	5000K		347V
				4'-5L	4,327lm	8'-10L	10,000lm			65	6500K	480	480V
				8'-4L	4,269lm								

8						
---	--	--	--	--	--	--

## Options

### Lenses

BLANK | Frosted Lens

### Finish

BLANK | Standard Gloss White  
C5 | Matte Black  
CUSTOM\* | Custom Colour Choice

### Dimming

B11 | 0-10V Dimming Leads  
B12 | Line Voltage Dimming  
B27 | Dim-to-off Driver  
B\*\* | Other Options Available\*

### Wireless Controls

WCAWN | Lutron Athena (Node)  
WCAWNS | Lutron Athena (Sensor)  
WC10 | Encelium  
WC18 | NX Wireless  
WC19 | Avi-on  
WC22 | JDRF Autonomy  
WC31 | Keilton  
WCxx | Other Options Available\*

### Emergency Driver

B17 | UL924 10W Battery Backup  
B36 | UL924 14W 2 Hour Battery Backup  
F8 | UL924 Emergency Relay

### Packaging

BLANK | Individually Boxed on Pallets  
P0 | Bulk Packaging

### Warranty

CL7 | 10-Year Comprehensive Warranty Upgrade

### Documentation and Resources

All files and resources are available on our website for download. Files and resources are also embedded as links in this document, listed below. Additional files may be available upon request.




Please contact your local sales agent [here](#) or contact [sales@bjtake.com](mailto:sales@bjtake.com) for more information.

 [BRLS4 Retrofit Kit Instructions 2025](#)

 [BRLS8 Retrofit Kit Instructions 2025](#)

### Certifications and Listings

Certifications that apply to this fixture and its possible configurations are listed here. More information available upon request.

Icon	Description
	Wireless Controls Available
	90 and 95+ CRI Options Available
	120-347V(UN3) Available

### Usage Applications

This fixture can be used in a variety of applications, and is ideal for the following:

Usage Application
Retrofit Kit
Grocery Stores
Hospitals
Manufacturing Facilities
Offices
Retail Stores
Schools
Storage Facilities
Surface Mount

### Warranty Statement

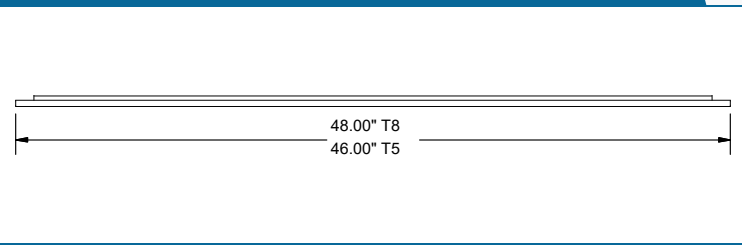
BJ Take products are tested and/or inspected prior to being packaged for shipment and are guaranteed from the day the product is shipped for a period of ten-year LED chip warranty and a five-year comprehensive component warranty. This can be upgraded to a ten-year comprehensive warranty on request.

# The Sutton Series

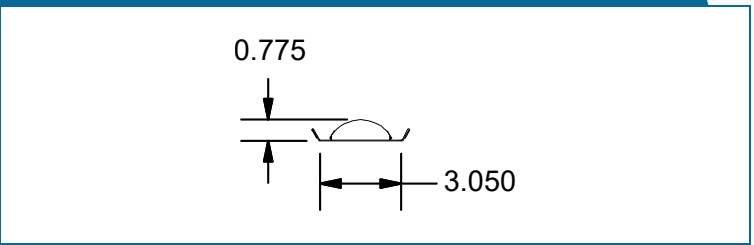
BRLS - Strip Retrofit Kit

Retrofit Lighting by **BJTAKE**  
LIGHTING

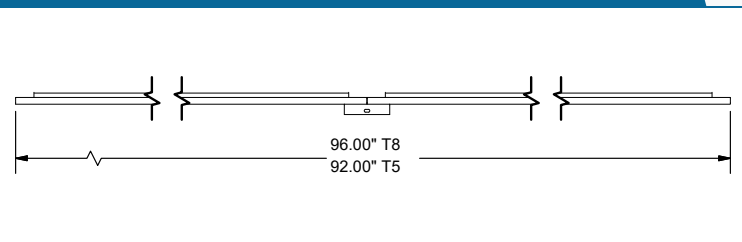
BRLS 4' Side



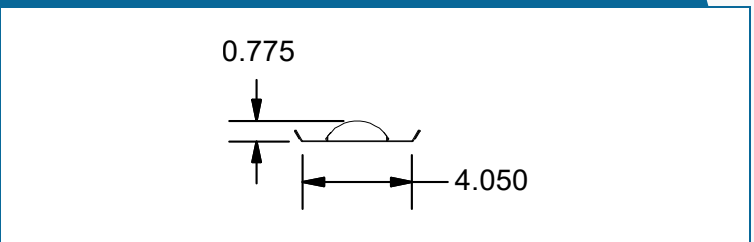
BRLS 3" End



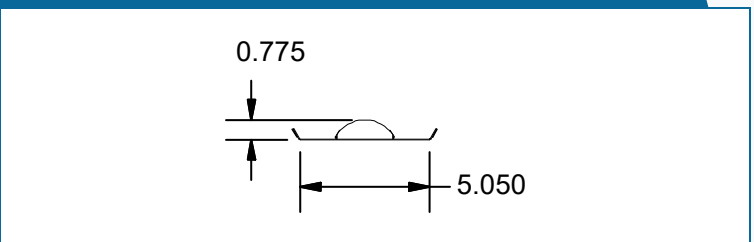
BRLS 8' Side



BRLS 4" End



BRLS 5" End



BRLR 1x4' Wattage

Length	Lumen Output	Actual Lumen Output	Fixture Wattage	Lumens per Watt
4'	2.0	2133	17.34	123.0
4'	2.5	2675	21.66	123.5
4'	3.0	3221	25.97	124.0
4'	3.5	3772	30.29	124.5
4'	4.0	4327	34.60	125.1

BRLR 2x2' Wattage

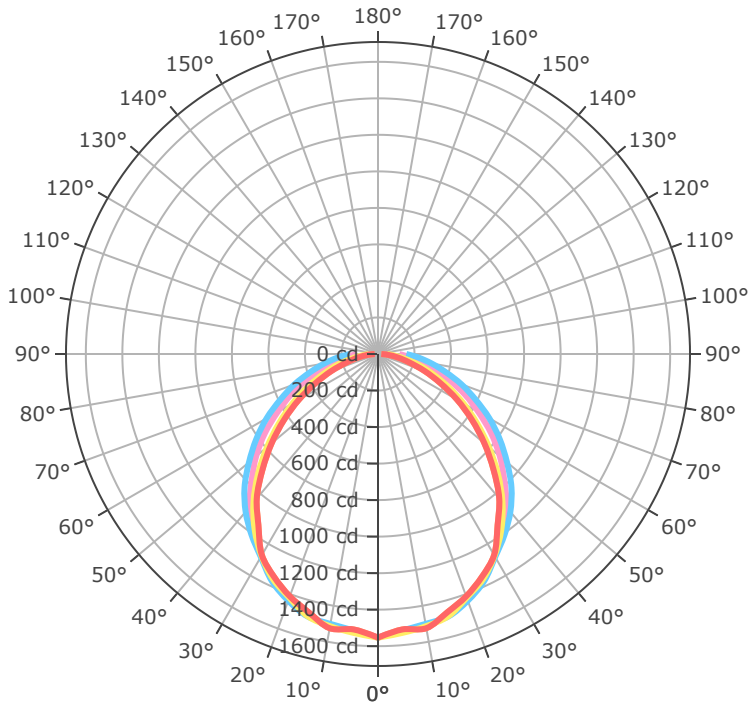
Length	Lumen Output	Actual Lumen Output	Fixture Wattage	Lumens per Watt
8'	4.0	4269	32.28	132.2
8'	5.0	5432	40.91	132.8
8'	6.0	6660	49.54	134.4
8'	7.0	7396	56.33	131.3
8'	8.0	8445	64.78	130.4

- \* Drawings not to scale
- \* Standard tolerances apply
- \* Specifications may change without notice

# The Sutton Series

BRLS - Strip Retrofit Kit

BRLS-4'-4L-840



- 0.0°
- 45.0°
- 90.0°
- 135.0°
- 180.0°

Mtg Height	Light Level	Beam Diameter
6.0 ft	43.1 fc	14.0 ft
8.0 ft	24.3 fc	18.7 ft
10.0 ft	15.5 fc	23.3 ft
12.0 ft	10.8 fc	28.0 ft
14.0 ft	7.9 fc	32.7 ft
16.0 ft	6.1 fc	37.3 ft
24.0 ft	2.7 fc	56.0 ft
32.0 ft	1.5 fc	74.7 ft
40.0 ft	1.0 fc	93.3 ft
48.0 ft	0.7 fc	112.0 ft
56.0 ft	0.5 fc	130.7 ft
64.0 ft	0.4 fc	149.4 ft

# The Sutton Series

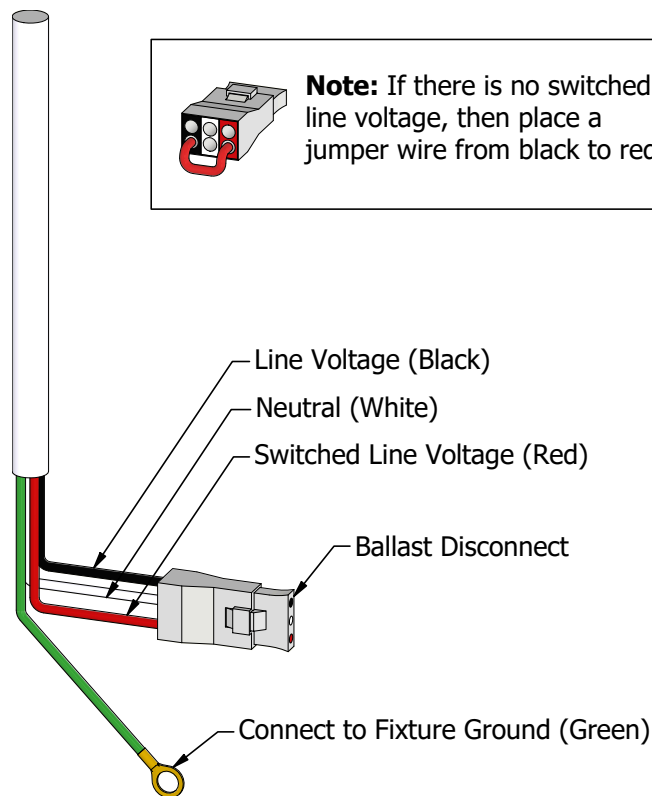
BRLS - Strip Retrofit Kit

Retrofit Lighting by **BJTAKE**  
LIGHTING

## Emergency Battery Plan - 10W

Emergency Lighting	Solution System Components	System Operation
Option Code 'B17' - UL 924 listed components that are factory installed in the luminaire	UL 924 listed 10-watt battery integral to the luminaire	Loss of normal power is detected by the B17 emergency light solution and the power supply is switched automatically to the 10-watt integral battery pack which powers the emergency LED lighting driver.
	UL 924 listed LED emergency lighting driver integral to the luminaire	The battery pack and emergency LED driver are UL 924 certified to provide a minimum of 90-minutes of emergency lighting.
	Wiring options for both switched and unswitched emergency lighting	

## Emergency Lighting Wiring



## Important Information

More information on emergency lighting options and configurations available on request.

## Gallery Information

Below you will find images of relevant products and configurations for the BRLS.

